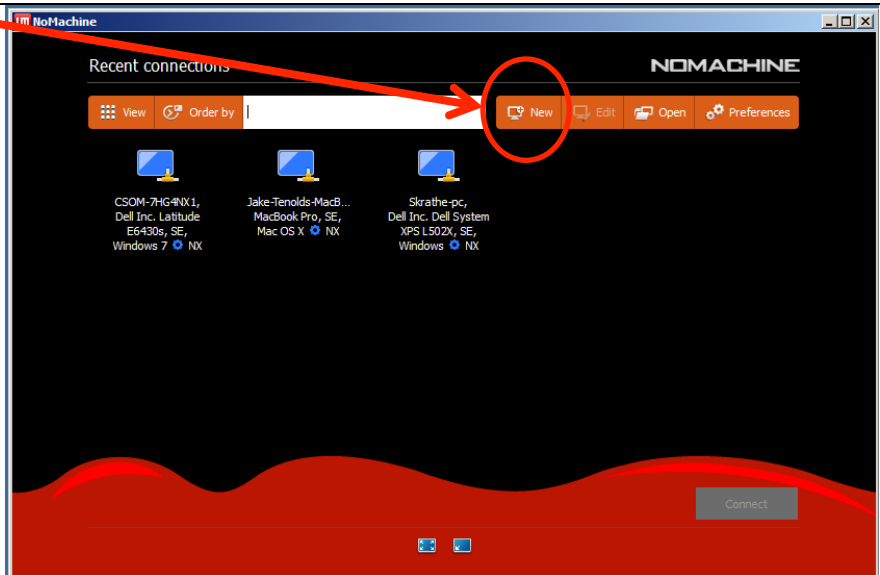


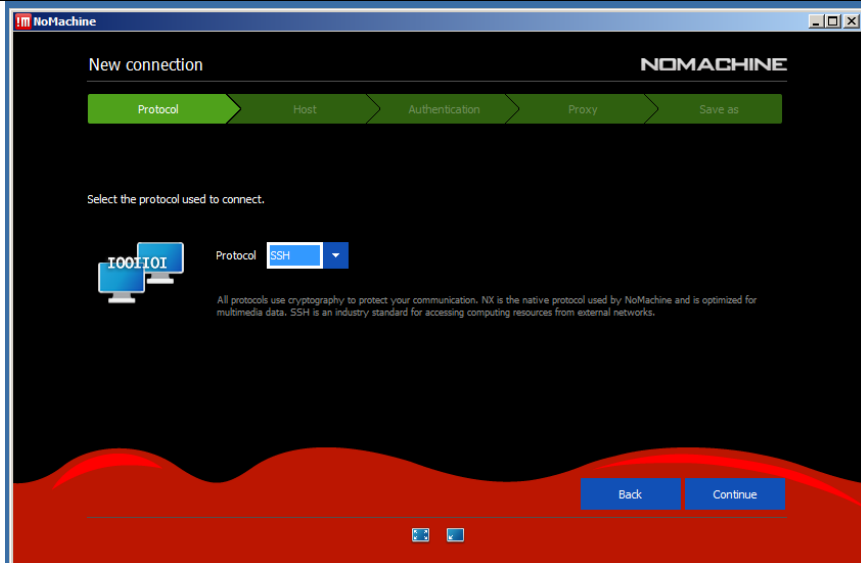
Setting up BlISS

Download and install NoMachine for your computer (www.nomachine.com). Launch No Machine and follow the screenshots.

Choose to make a new connection



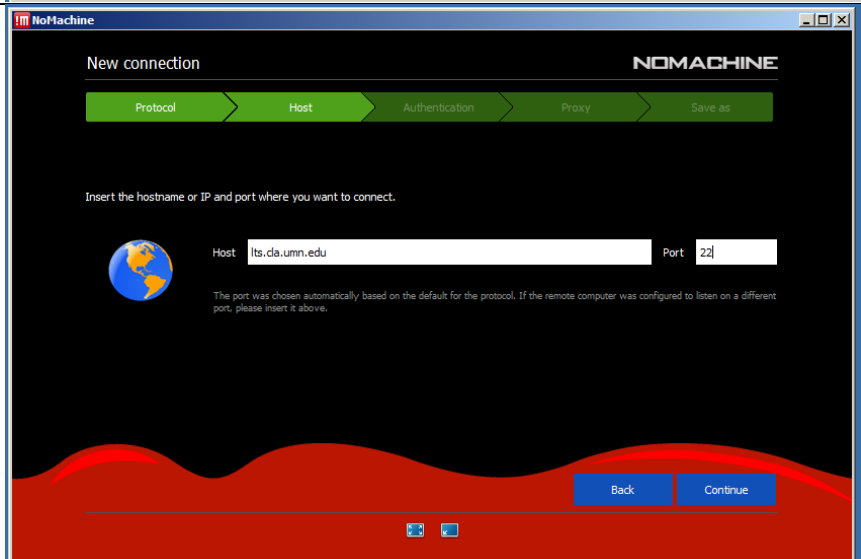
Choose "SSH" as the protocol



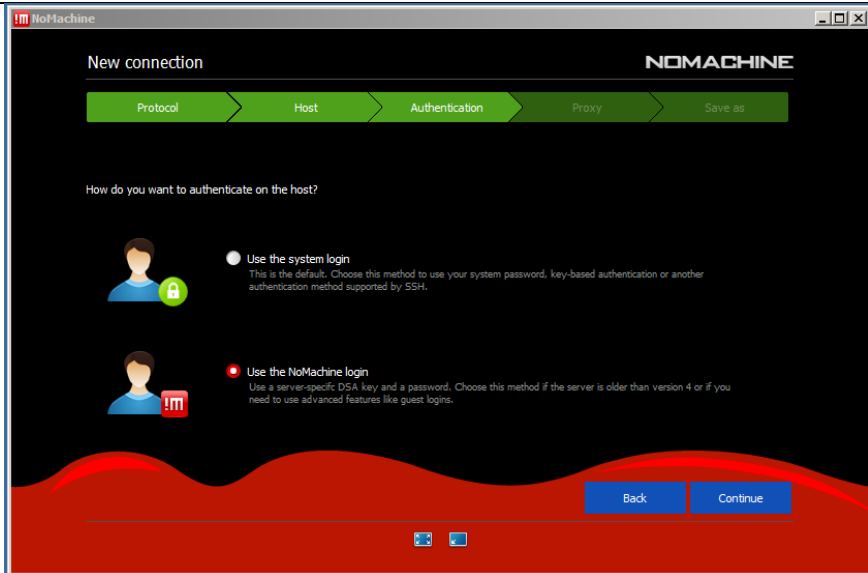
Type in the server address:

Its.cla.umn.edu

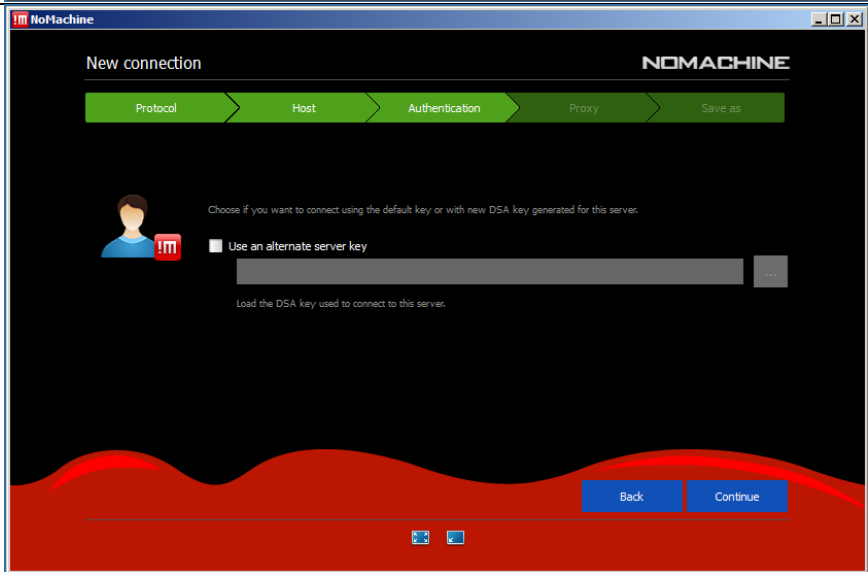
Choose port **22** (should be pre-filled for you if you chose SSH on the previous screen).



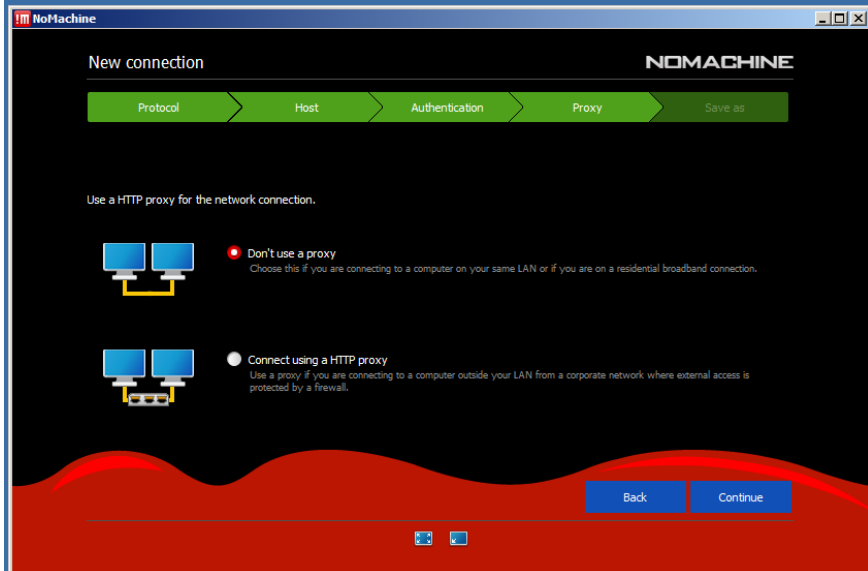
Choose to use the No Machine login not the system log in. This will let you use your X.509 login rather than how you log in to your local machine.



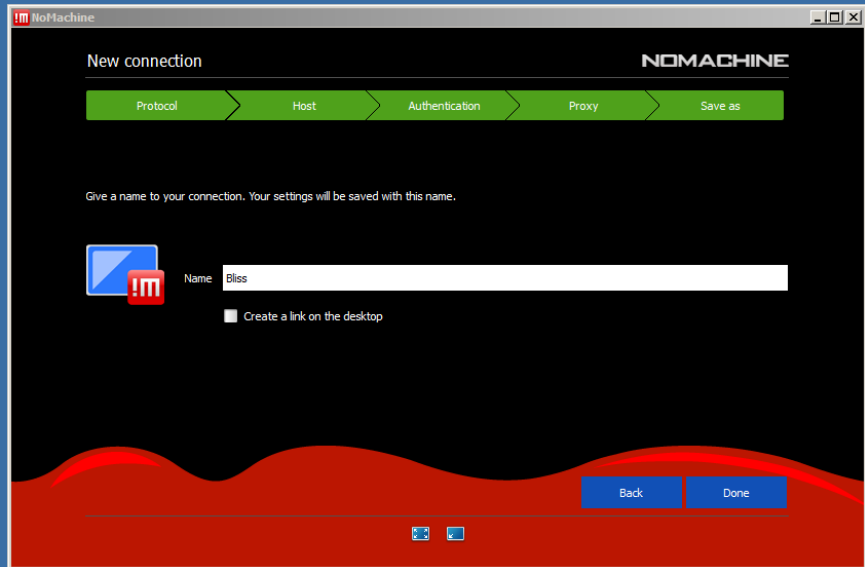
Leave the "alternate server key" un-checked



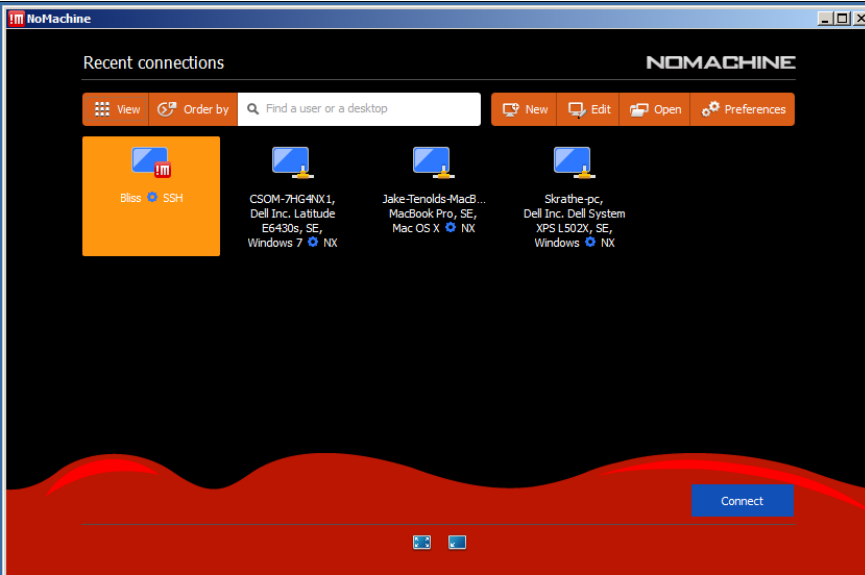
Don't use a proxy



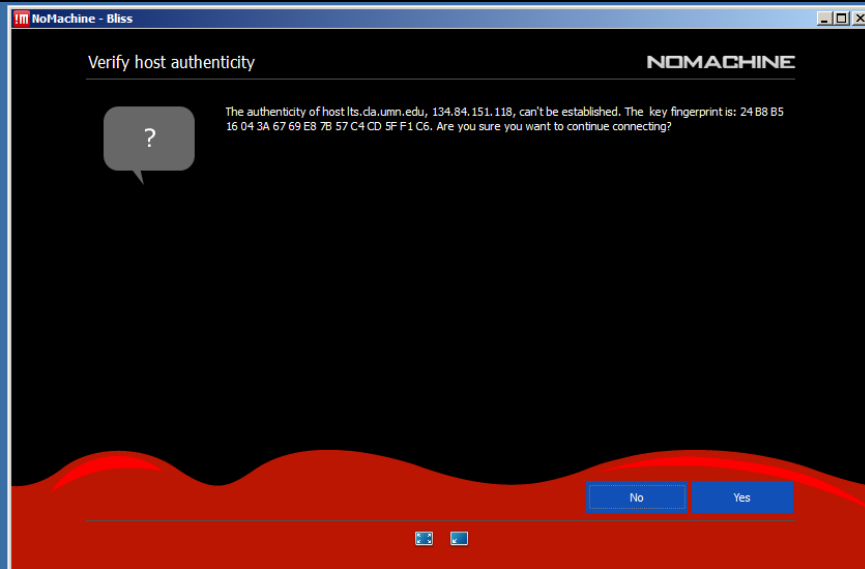
Here you can provide a nickname for the connection. Something like "bliss" is helpful.



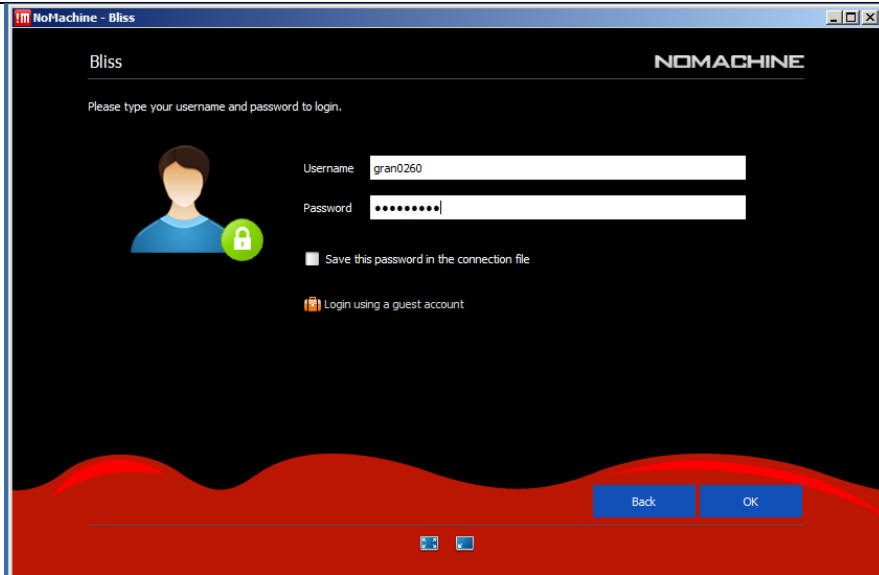
Now your connection has been created. Click on it to select it and then click "connect"



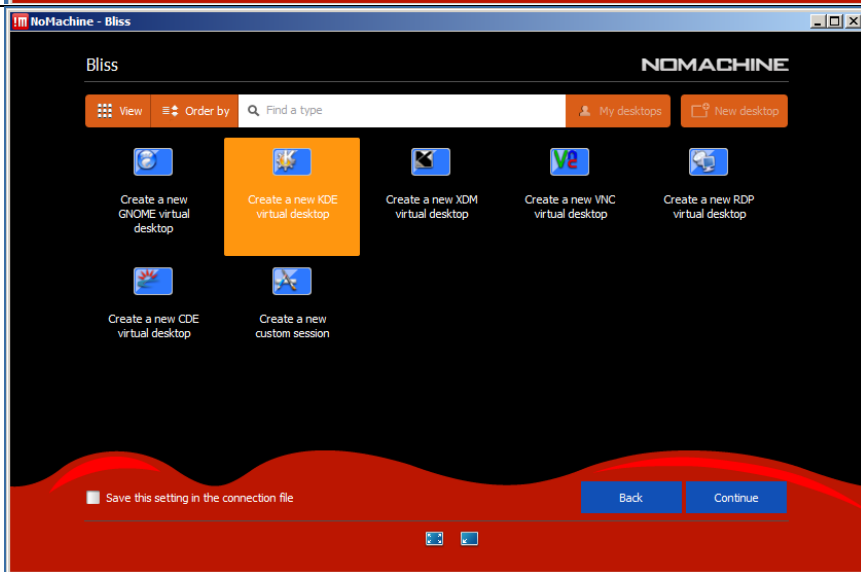
The first time you connect it will ask you to verify the host authenticity. Click yes.



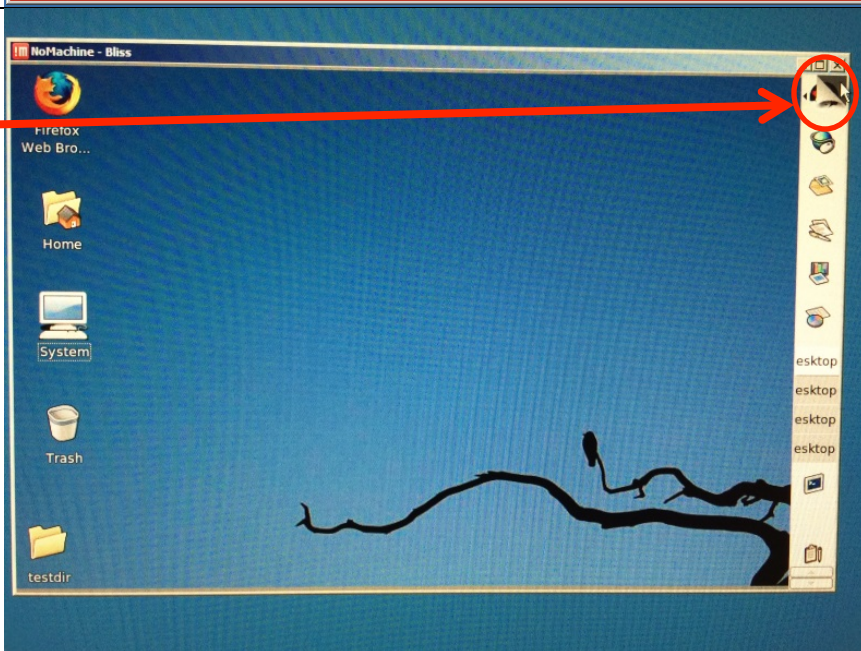
Log in with your U of M X.500 credentials

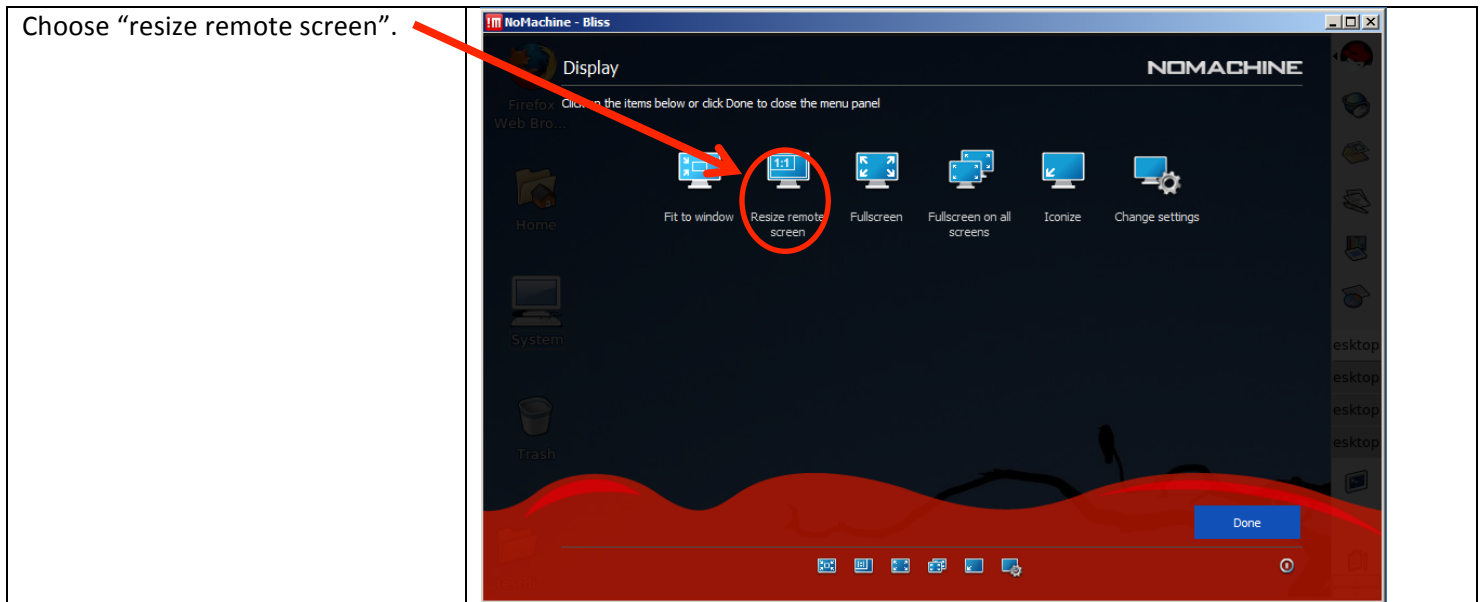


The first time you connect, you need to start a new remote desktop. KDE is a good desktop environment, but you are free to choose Gnome or whichever one you like!



If the remote screen, is small, mouse up to the upper right corner of the NX window until a little "flap" comes down. Click on the flap, then choose "Display".





Historically ... the FIRST thing to do when you log in to BLiSS (first time only) was to disable your remote screensaver. Right click on the desktop, select Configure Desktop ..., click ScreenSaver on the left, and UNCHECK "Start Automatically." I think that's been fixed (a dumb setting for an OS that is only ever activated remotely to have), but it doesn't hurt to check ...

Once you log in to BLiSS, you will automatically be in your home directory. This is a Linux operating environment, so some things may look familiar and some might not. When you log in, you log in to the server named lts – this is a gateway server that runs all the NX Client interfaces, but does not have any specialized software (e.g., Matlab, FSL) on it. So the first thing to do is move over to another server:

- 1) Open a terminal window, if there isn't already one open on your desktop (see next page)
- 2) Type the following: ssh satisfaction

and enter your password when prompted

... instead of going to satisfaction, you can also go to joy, delight, elation, glee, euphoria or rapture ... or sif, vol, loki, thor ... or other players to be named later in the trade. They all run the same set of software packages.

To launch Matlab, open a terminal window (see next page), and type:

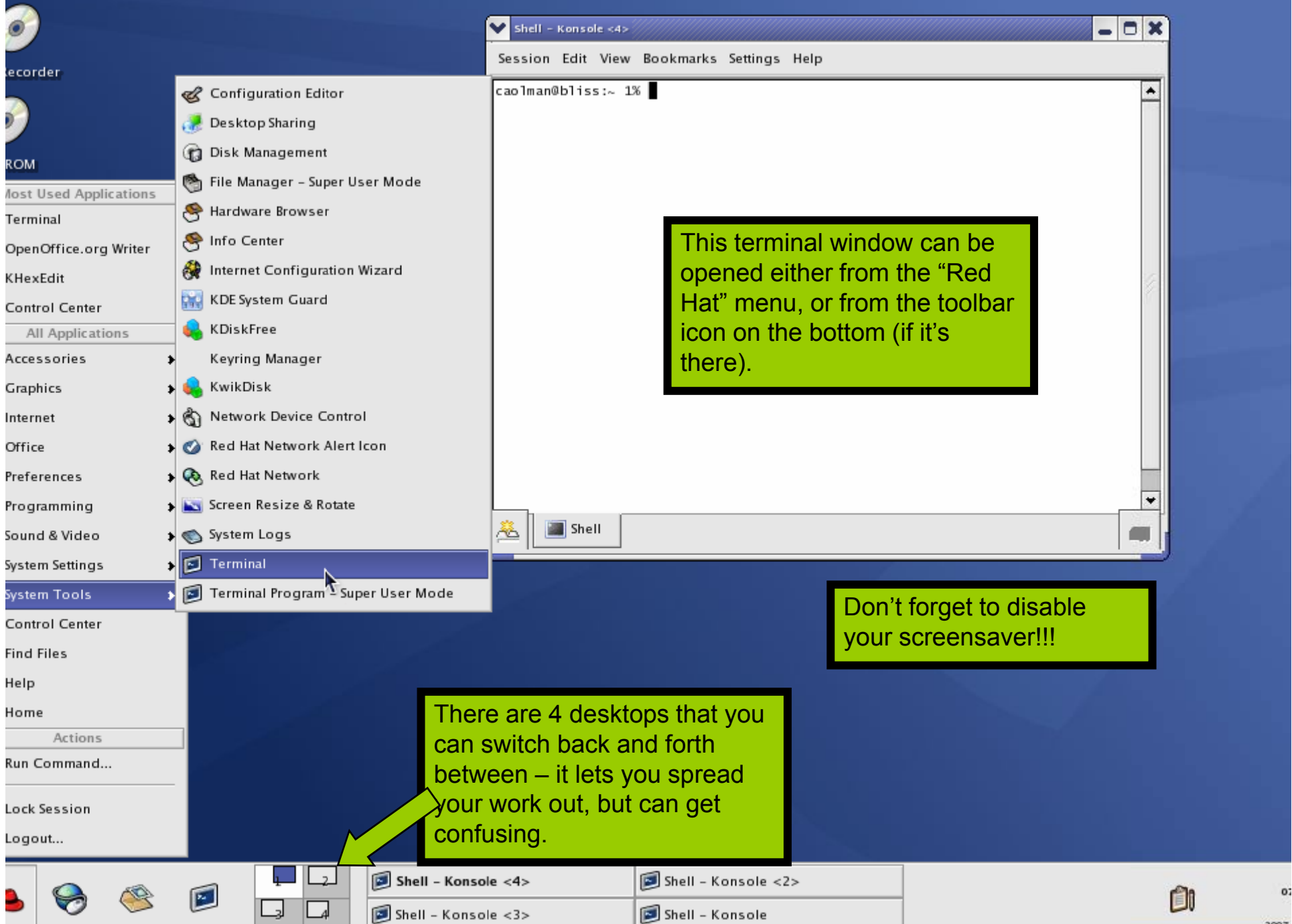
```
% cd /labs/olmanlab/PSY5065/Assignments  
% matlab &
```

The ampersand is optional, but it makes Matlab run in the background so you can still use the terminal window. (The % sign is not something you type; it's the command prompt.)

After Matlab launches, you'll find yourself in the command window. You can either use the file browser to open the assignment (e.g. HW1.m), or type

```
>> edit HW1.m
```

at the Matlab prompt (again ... >> indicates the Matlab command prompt). This 2nd option (the "edit HW1.m" option) will only work if you're in the Assignments directory. With the HW1.m script open, you can execute lines or cells to complete the assignment.



This terminal window can be opened either from the "Red Hat" menu, or from the toolbar icon on the bottom (if it's there).

Don't forget to disable your screensaver!!!

There are 4 desktops that you can switch back and forth between - it lets you spread your work out, but can get confusing.