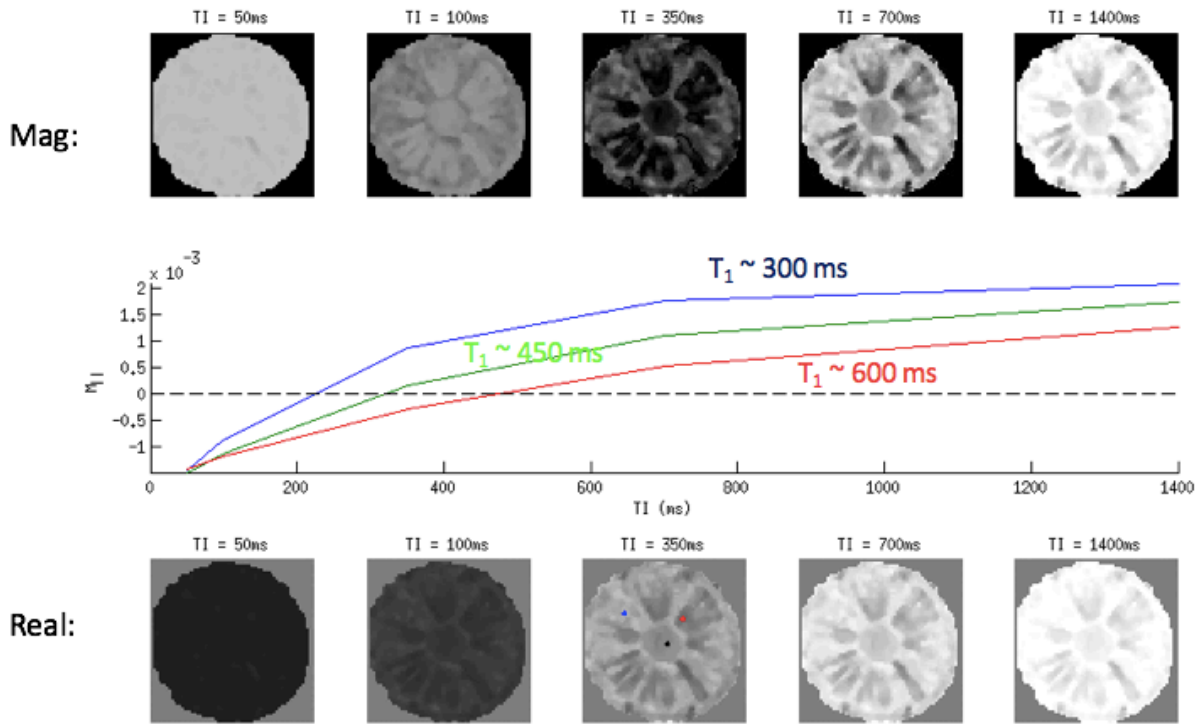


HW6: T1 relaxation (after inversion)



1) What is different about the top and bottom rows of images? (1 sentence)

2) What inversion time would you use to null the signal from the "tissue" with $T_1 = 450ms$?

Hint: the basic equation describing magnetization as a function of time in an inversion-recovery experiment is $M = M_0(1-2e^{-t/T_1})$. You want to find the value of t that sets M equal to 0.

3) What would be the appropriate inversion time for nulling the signal from the "green tissue" if it only had half as much water in it (half the proton density)?